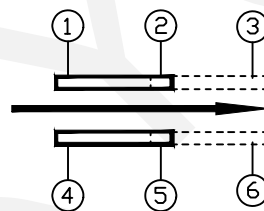
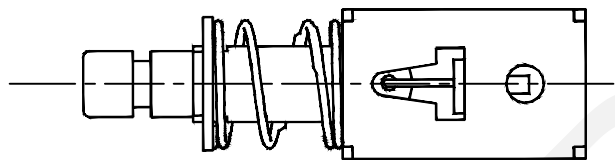
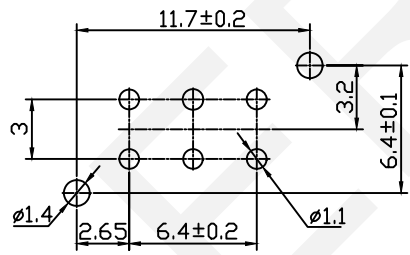


Electrical:  
 Voltage Rating:30V DC  
 Current Rating:0.3A  
 Contact Resistance:50mΩ Max.  
 Insulation Resistance:100MΩ Min  
 Dielectric Withstanding Voltage:250V AC  
 Mechanical:  
 Operating Force:2~6N  
 Operating Life:10000 Cycles  
 Notes:  
 Install The Switch: keep The Appearance  
 Clean And Smooth Without Scratching And Feel Good.



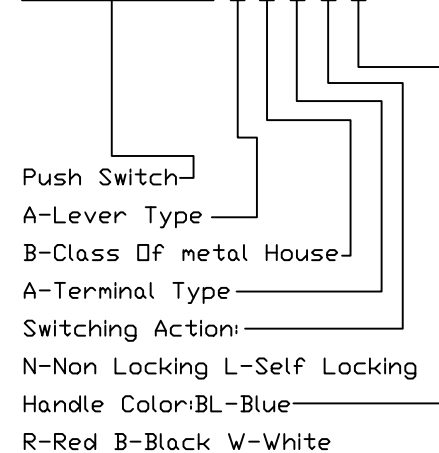
Schematic Diagram



PCB Mounting Hole

Order Information:

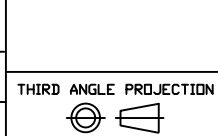
ERYGYS-003-22 A B A-X-X



NINGBO ERYCO ELECTRONIC CO.,LTD

UNITS:mm	SHEET SIZE: A4	SCALE:---	DRWN BY PAN
0~3	3~18	18~50	50~120
±0.12	±0.15	±0.3	±0.5

CHK'D BY FENG  
 APPR BY ZHAN



Push Switches  
 ERYGYS-003-22ABA-X-X